

**ERITECH®**

# Grounding, Lightning Protection and Surge Protection

For Telecommunications



**ERICO®**

# Indoor Bonding Layout

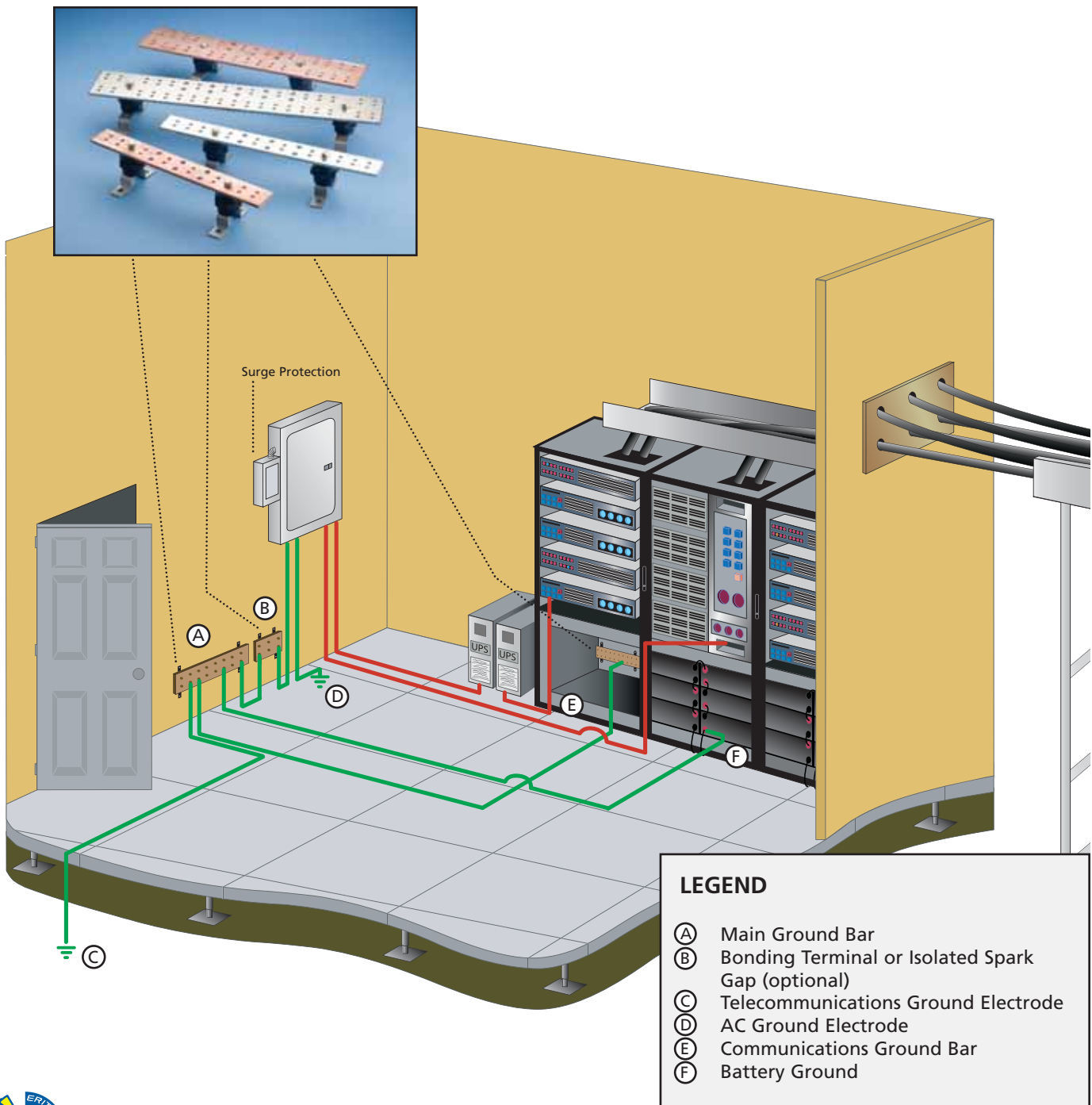
Grounding/earthing, lightning protection and surge protection are critical parts of a telecommunications facility installation. ERICO® has complete telecommunications applications solutions to help protect the facility against electrical noise, lightning induced surges and transients caused by switching components in the power systems.

ERICO solutions include ERITECH® ground rods, ground mats, ground enhancing material (GEM), ground bars, CADWELD® connections, ERITECH lightning protection systems and CRITEC® MDF, co-axial and power surge protectors.

To make the application of these products simpler, the grounding, lightning protection and surge protection system at a telecommunications facility is divided into 5 components.

1. Indoor Bonding Arrangement
2. Outdoor Grounding Arrangement
3. Surge Protection for Power Lines
4. Surge Protection for Telephone Lines
5. Direct Strike Lightning Protection

ERITECH ground bars can be used to achieve the ideal indoor grounding arrangement as required at the telecommunications facility.

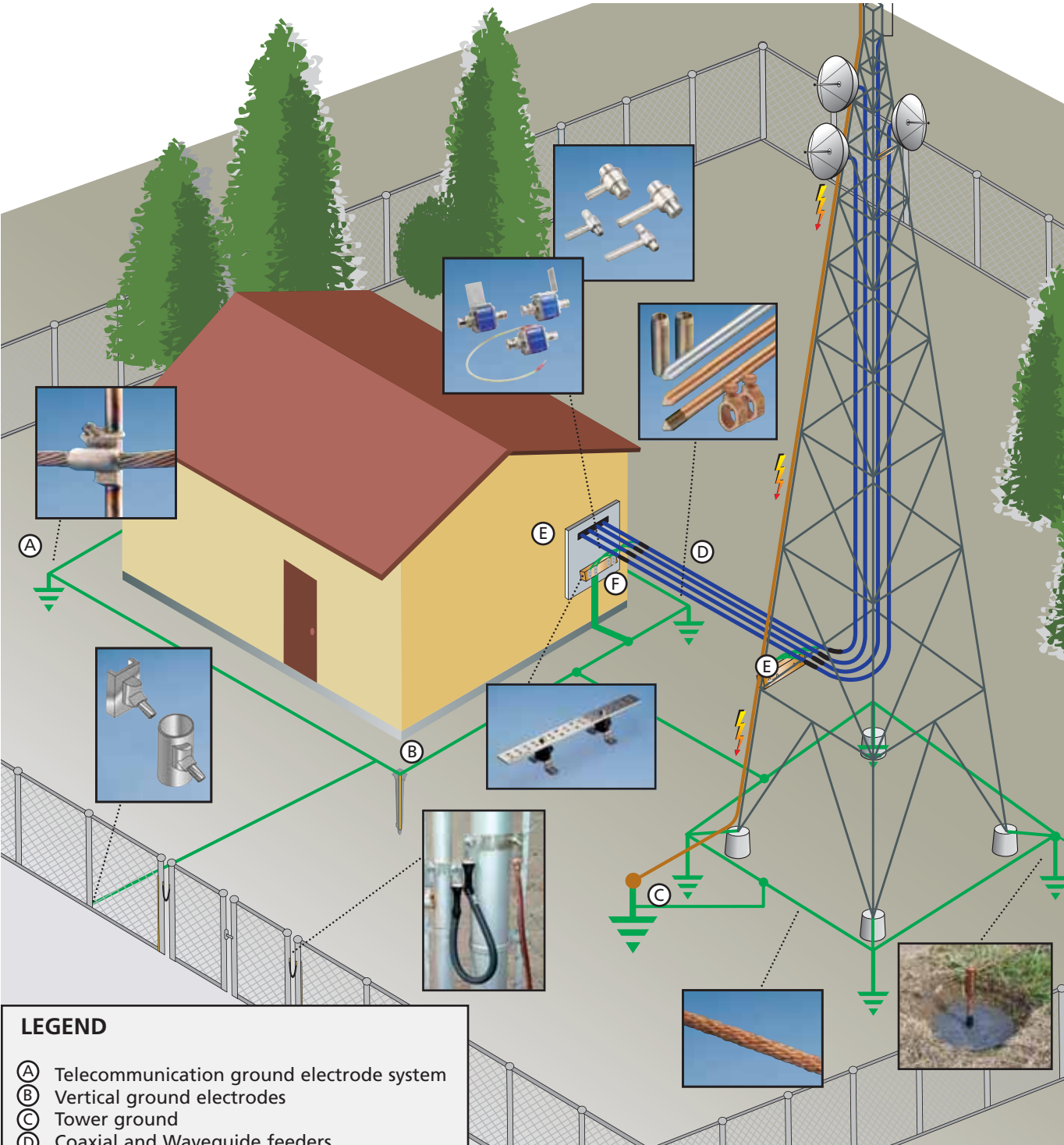


# Outdoor Grounding / Earthing Layout

The outdoor arrangement of a grounding system at a telecommunications facility is depicted here. This arrangement is not always possible due to certain constraints at the site. Where the telecommunication equipment is installed in a large multi functional building or several floors above the ground floor this layout may not be possible.

Alternative outdoor ground electrode system needs to be considered on a case by case basis if the suggested layout below is not possible to implement.

ERICO® offers a full range of products to form the outdoor grounding system at a telecommunications facility.



- LEGEND**
- (A) Telecommunication ground electrode system
  - (B) Vertical ground electrodes
  - (C) Tower ground
  - (D) Coaxial and Waveguide feeders
  - (E) Coaxial surge protectors or ground kit
  - (F) RF Ground Bar



# ERITECH® Ground Rods, Connections and Accessories

## ERITECH® Ground Rods

ERICO® offers a range of ground rods for telecommunications applications to suit the needs and preferences of the carriers. The most common of these are copper bonded steel ground rods, due to their versatility in varied soil conditions and compatibility with various common metals used underground.

The copper-bonded ground rod has an electrolytic coating of copper deposited over a layer of nickel. This process helps ensure a long lasting, molecular bond between the copper layer and the steel core. ERICO recommends copper-bonded ground rods because the copper coating will not slip or tear when driven, nor will it crack if the rod is bent. The tough, carbon steel core has good characteristics for deep driving. Copper-bonded ground rods have a high resistance to corrosion and provide a low resistance path to ground.

It is important to note that certain soils and landfill areas may not be compatible with copper. In these situations, stainless steel is a better choice. Stainless steel may also be an alternative, when structures or components, such as steel towers, poles or lead sheathed cables are in close proximity to an array of ground electrodes. In these circumstances, consideration must be given to the consequence of galvanic corrosion.

## Grounding Connections

Grounding connections are vital to the proper operation and integrity of the electrical system. ERICO offers a range of mechanical grounding connections including clamps, jumpers, fence connections, U-Bolts and other clamps.

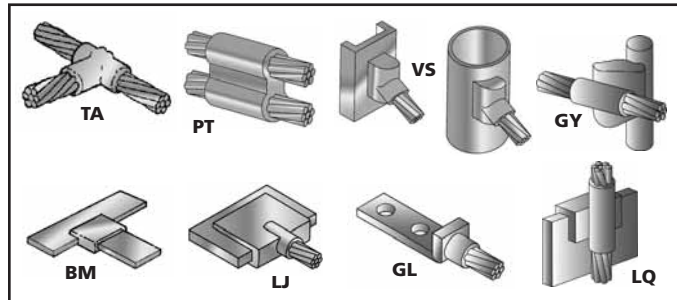
However, the CADWELD® welded electrical connection is our recommended method of making grounding connections. The principle technology consists of bringing together a welding material and ignition agent in a suitable graphite mold. The reduction of copper oxide by aluminum produces molten copper and aluminum oxide slag at extremely high temperatures. The shape of the mold, its dimensions, and the size of welding material, are all dependent on the items to be welded.



The key benefits of CADWELD are:

- Connections are permanent and will not loosen or corrode.
- Connections are made with inexpensive, lightweight equipment.
- Connections can be made without the need for any special skills.

The CADWELD connection is essentially a fusing through of the grounding conductor, whereby there is greater amount of metal across the cross section of the connection than that across the conductor. It can be intuitively seen that the connection is as good as the conductor, if not better, which is a unique feature of CADWELD. Independent scientific tests have been done to CADWELD using the most stringent standards associated with high voltage electrical installations.



Typical CADWELD Connections used in telecommunications grounding and bonding



Ground Bar



Ground Clamp



Ground Clamp



Earth Tester

## Grounding Conductors and Accessories

The two most common grounding conductors used in telecommunications are round cables or flat tape. Flat tape conductors have a lower inductance and provide a higher capacitive coupling to the ground, which results in a lower impedance earth system, especially at high frequencies associated with lightning and telecommunications noise. ERICO offers a range of conductors including bare or tinned copper tape, bare copper cables and smooth weave cable conductors.

In situations where ground conditions make it difficult to achieve the required resistance, ERICO offers Ground Enhancement Material (GEM). GEM is a low-resistance, non-corrosive, carbon dust based material that improves grounding effectiveness, especially in areas of poor conductivity. GEM contains cement, which hardens when set to provide a permanent, maintenance-free, low-resistant grounding system that will not leach or wash away.

ERICO also provides a range of coaxial surge protectors that are suitable for use up to a frequency of 3 GHz. It is strongly recommended that feeders not fitted with coaxial surge protectors be grounded via appropriate grounding kits.

The ERITECH EST series of earth testers are available for testing of soil resistivity and ground resistance of electrodes.



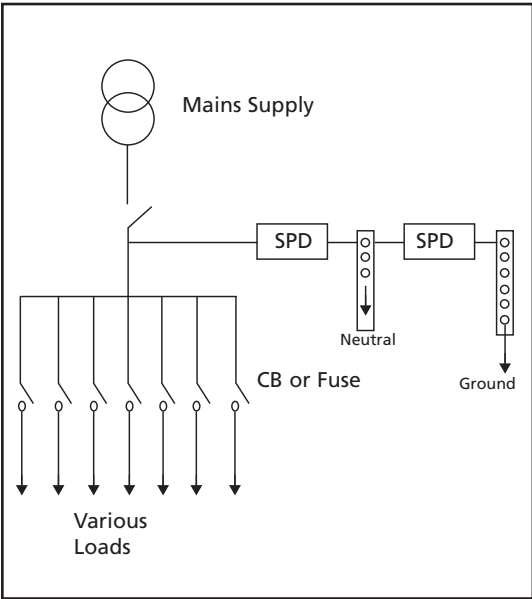
# Surge Protection for Power and Telephone Lines

A telecommunications site needs reliable grounding for the purpose of good reference ground, noise control and dissipation of any lightning energy. Surges in the power and copper based telephone lines can also originate from lightning strikes that have struck objects some distance from the actual site, in many cases, even miles away. Having a good ground alone is not enough to minimize damage due to these surges caused by distant strikes. Surges can also occur in power lines due to switching of circuit breakers in the power systems under fault conditions. It is important to have adequate surge protection on the AC mains and on telephone lines.

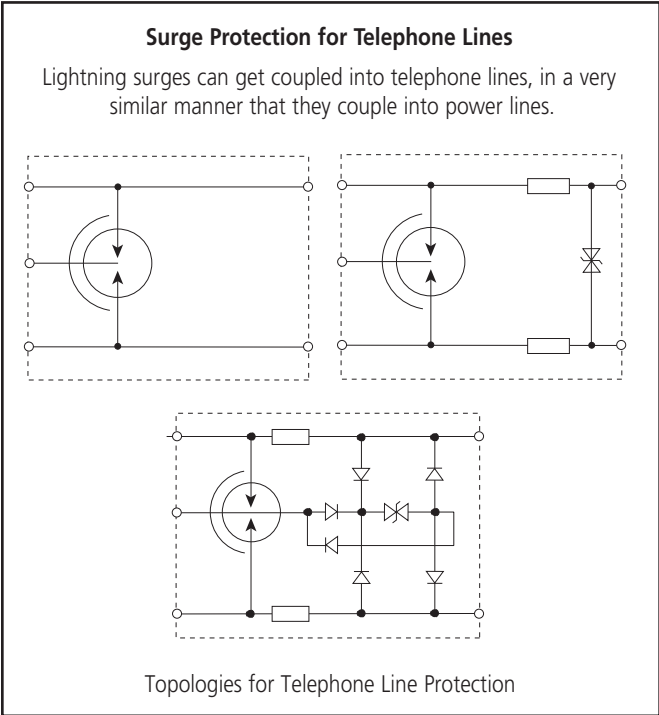
The best starting point in the selection of surge protection devices is to look at the following 5 ratings as defined by IEC® standards and choose suitable levels for the application.

- Maximum Discharge Current, or  $I_{max}$ . This is the single shot rating of the SPD.
- Nominal Discharge Current or  $I_n$ . This is the 15 shot rating of the SPD.
- Voltage Protection Level, or  $U_p$ . This is the voltage to which surges tested to IEC standards are limited to. Normally this test is done at 1n. Sometimes this test is done at 3kA 8/20us. The lower the  $U_p$  the better the SPD is as a protection device.
- Maximum Continuous Operating Voltage, or  $U_c$ . SPD's can experience damage if the supply voltage exceeds their clamp voltage for a prolonged duration. A high  $U_c$  will mean that the product is rugged against over-voltage events.

### Typical Wiring of a SPD at a Main Switch Board



The SPD arrangement shown left is called shunt surge protection whereby the SPD is connected in parallel with the load. The limitation of this type of protection is that while the surge voltage is controlled to a manageable level, these devices do not lower the voltage rise time of the incoming surges. It is widely acknowledged that both the voltage level as well as the rise time of power surges can cause damage to sensitive electronics. In applications where a higher level of protection is deemed necessary due to the critical nature of the telecommunications network element, surge reduction filters can be used to effectively reduce the voltage levels and rise times.



A single stage gas arrester installed at the main distribution frame helps ensure that both of the lines are shorted to ground momentarily to take bulk of the energy down to ground when a surge occurs. However, because it is not possible to short out the two lines at exactly the same moment, a differential mode transient develops which is very damaging to the end equipment. Hence in critical applications, the use of single stage gas arrester modules at main distribution frame is not adequate. Surge protective devices with secondary clamping stages provide a better protection.

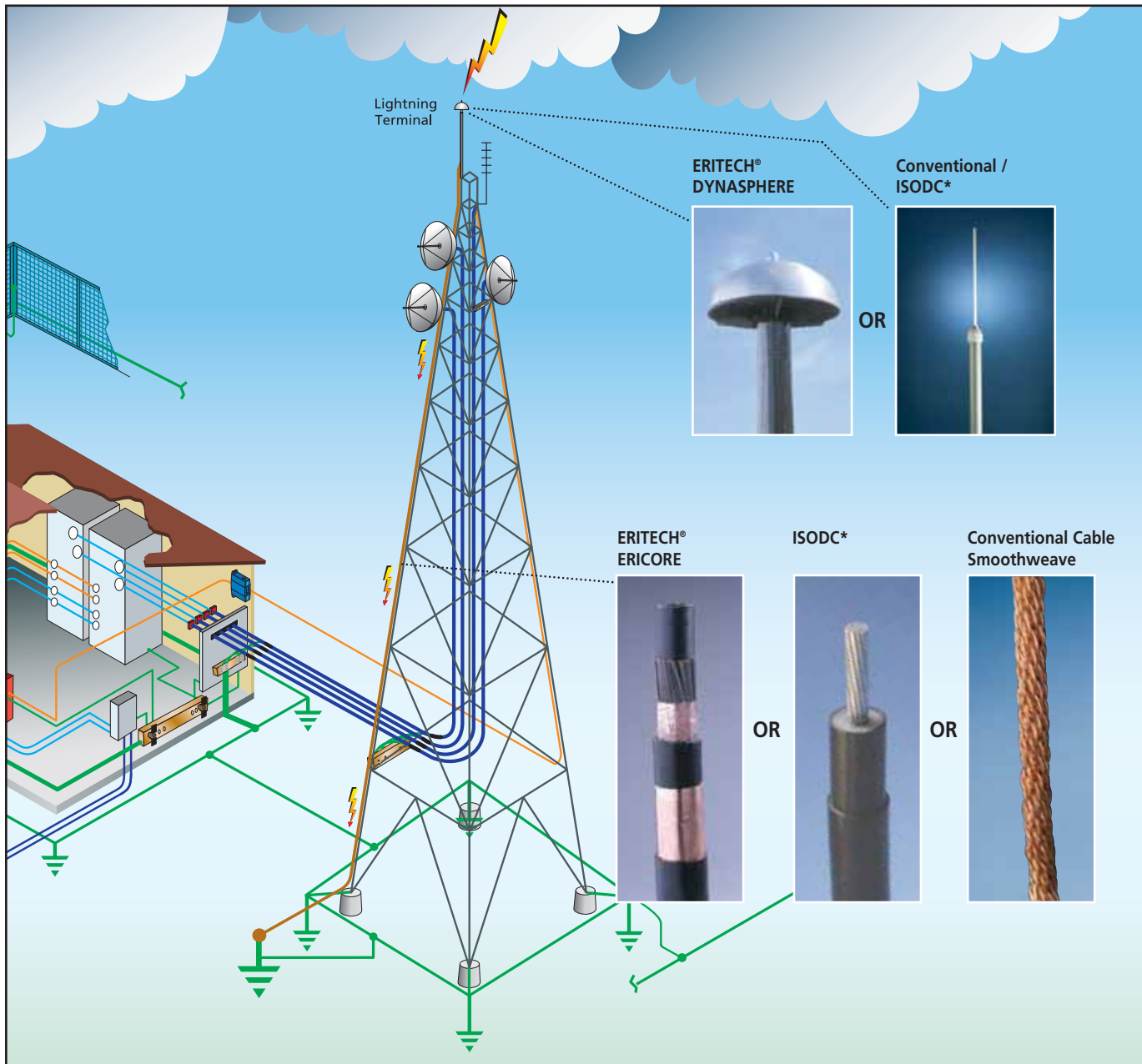


# Lightning Protection for Telecommunications Towers

Direct lightning strikes to telecommunications towers are a reasonably regular occurrence, more so on mountain tops and in certain parts of the world. The traditional approach to lightning protection on towers is to have a lightning rod on the top of the tower and a dedicated down conductor comprised of bare cable or tape that is installed on the tower to connect the lightning rod to the ground.

A modern method is to use an optimal air terminal design, the ERITECH® DYNASPHERE mounted on top of the telecommunications mast on a 3-4 metres long fibreglass reinforced pole, FRP. The FRP provides isolation between the air terminal and the tower and helps ensure that the

lightning does not flash over and electrify the mast or the antenna. A special purpose downconductor, called the ERITECH® ERICORE is routed in the core of the FRP and connects to the bottom of the ERITECH® DYNASPHERE via a high voltage, impulse rated termination. The ERITECH® ERICORE runs along a leg of the tower away from the routes of feeders, down to the tower grounding system. ERITECH® ERICORE cable is designed to minimize the voltage between itself and the tower so that the bulk of the lightning energy is contained within the cable, thereby protecting the tower and feeders from conducted lightning currents and having much less reliance on bonding practices which sometimes are overlooked or completed incorrectly.



\* ISODC - is an isolated lightning protection cable system based around IEC62305. It is designed to isolate the lightning current from sensitive equipment, eliminating the need for separation distances required with conventional cable. Contact ERICO® for further information.



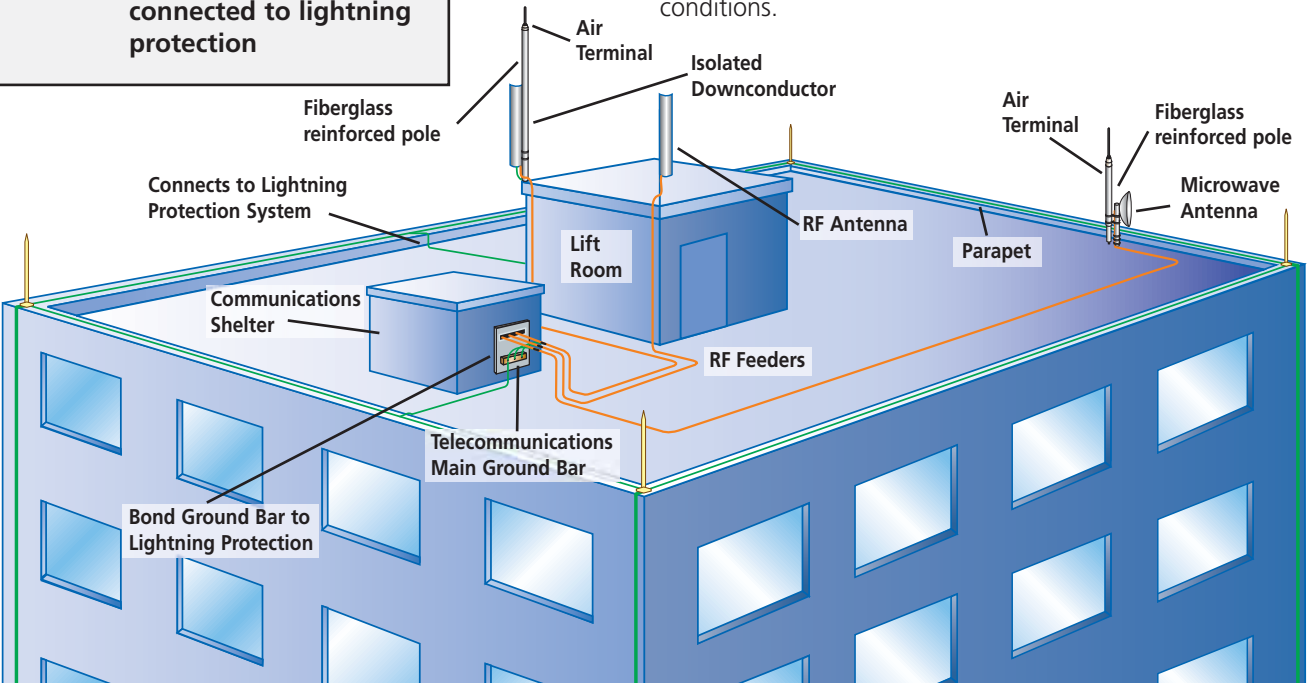
# Lightning Protection for Roof Mounted Installations

Traditionally, some rooftop installation have been protected by the use of air terminals (Franklin Lightning Rods), often connected to the building lightning protection system. However, the traditional building lightning protection techniques are not well suited to protect these roof top installations. Hence many telecommunications companies have opted not to provide any form of air terminal. Instead they do extensive bonding of all their roof mounted equipment.

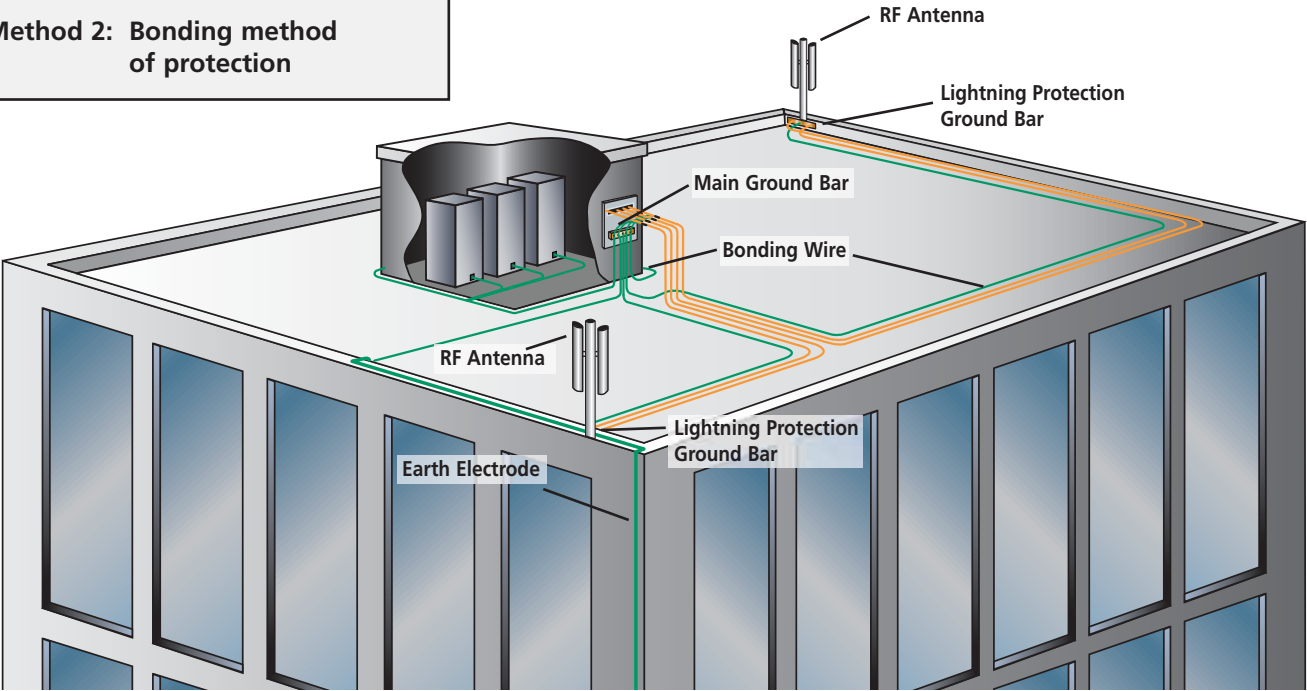
The ERITECH® Isolated Downconductor System provides a modern approach to lightning protection for rooftop installations. The ERITECH isolated system provides a traditional air terminal fitted to an isolated fiberglass reinforced plastic (FRP) mast. The isolated downconductor internally connects to the air terminal inside the FRP. The FRP mast has natural isolation properties, high strength for windy sites and low weight to minimize mast loading.

The advantage is that this downconductor can be mounted directly on the mast or structure to be protected – without electrification of mounted equipment under lightning conditions.

**Method 1: Isolated downconductor connected to lightning protection**



**Method 2: Bonding method of protection**





# ERICO®



[www.erico.com](http://www.erico.com)



## AUSTRALIA

6 Chilvers Road  
P.O. Box 148  
Thornleigh (Sydney) NSW 2120  
Australia  
Phone 61-2-9479-8500  
Fax 61-2-9484-9188



## GERMANY

66851 Schwanemühle  
Germany  
Phone 49-6307-918-10  
Fax 49-6307-918-150



## POLAND

ul. Krzemieniecka 17  
54-613 Wrocław  
Poland  
Phone 48-71-374-40-22  
Fax 48-71-374-40-43



## BELGIUM

Postbus 33  
3110 Rotselaar  
Belgium  
Phone 32-14-69-96-88  
Fax 32-14-69-96-90



## HONG KONG

Unit 1, 2nd Floor, Block A  
Po Yip Building  
62-70 Texaco Road  
Tsuen Wan, New Territories  
Hong Kong  
Phone 852-2764-8808  
Fax 852-2764-4486



## SINGAPORE

Jurong Industrial Estate  
16 Wan Lee Road  
Singapore 627 946  
Phone 65-6-268-3433  
Fax 65-6-268-1389



## BRAZIL

R. Dom Pedro Henrique de Orleans  
E Braganca, 276  
Vila Jaguara  
São Paulo CEP 05117-000  
Brazil  
Phone 55-11-3621-4111  
Fax 55-11-3621-4066



## HUNGARY

P.f. 184  
1476 Budapest  
Hungary  
Phone 31-13-58-34-547  
Fax 31-13-58-35-499



## SPAIN

C/Provenza 288, Pral.  
08008 Barcelona  
Spain  
Phone 34-93-467-7726  
Fax 34-93-467-7725



## CANADA

P.O. Box 170  
Mississauga, Ontario  
Canada L5M 2B8  
Phone 1-800-677-9089  
Fax 1-800-677-8131



## INDONESIA

Sampoerna Strategic Square,  
Tower B 19th Fl.  
Jalan Jend. Sudirman Kav. 45-46  
Jakarta 12930  
Indonesia  
Phone 62-21-575-0941  
Fax 62-21-575-0942



## SWEDEN

Box 211  
201 22 Malmö  
Sweden  
Phone 46-40-611-13-60  
Fax 46-40-611-94-15



## CHILE

Alcantara 200, piso 6 Of. 17  
Las Condes, Santiago  
Chile  
Phone 56-2-370-2908  
Fax 56-2-370-2914



## ITALY

A&B Business Center  
Via Valla 16, nr. 17  
20141 Milano  
Italy  
Phone 39-02-8474-2250  
Fax 39-02-8474-2251



## SWITZERLAND

Postfach 54  
3280 Murten  
Switzerland  
Phone 00-800-5000-1090  
Fax 00-800-6000-1090



## CHINA

Room 1204  
Tomson Commercial Building  
No. 710 Dongfang Road  
Pudong, Shanghai  
P.R. China 200122  
Phone 86-21-5081-3900  
Fax 86-21-5831-8177



## MEXICO

Melchor Ocampo 193  
Torre A piso 13  
Col. Veronica Anzures  
11300 Mexico D.F.  
Mexico  
Phone 52-55-5260-5991  
Fax 52-55-5260-3310



## THAILAND

163 Ocean Insurance Bldg.  
16th Fl. Unit B  
Surawongse Road  
Bangrak Bangkok 10500  
Thailand  
Phone 66-2-634-1692  
Fax 66-2-634-1694



## DENMARK

Box 211  
201 22 Malmö  
Sweden  
Phone 46-40-611-13-60  
Fax 46-40-611-94-15



## NETHERLANDS

Jules Verneweg 75  
5015 BG Tilburg  
Netherlands  
Phone 31-13-58-35-400  
Fax 31-13-58-35-499



## UNITED KINGDOM

52 Milford Road  
Reading, Berkshire RG1 8LJ  
United Kingdom  
Phone 44-118-955-0900  
Fax 44-118-955-0925



## FRANCE

rue Charles Dallière, BP 31  
42161 Andrezieux Boutheón Cedex  
France  
Phone 33-4-77-36-54-32  
Fax 33-4-77-55-20-10



## NORWAY

Postboks 148  
1366 Lysaker  
Norway  
Phone 47-67-53-12-00  
Fax 47-67-12-42-68



## UNITED STATES

34600 Solon Road  
Solon, Ohio 44139  
U.S.A.  
Phone 1-440-248-0100  
Fax 1-440-248-0723